



SCAN HERE

Canon

Delighting You Always

CANON NETWORK CAMERAS

Intelligent Wide Angle Solution • Ideal for any Application

111.5° WIDE ANGLE OF VIEW
EXTENDED LOW LIGHT CAPABILITIES
2.4X OPTICAL ZOOM
F/1.2-1.8 IR CORRECTED SUPER UD LENS



**VB-M640V &
VB-M641V**
Indoor Compact
Vandal Dome

113.4° WIDE ANGLE OF VIEW
VB-M741LE:
INBUILT INFRARED
ILLUMINATION, UP TO 30M



**VB-M740E &
VB-M741LE**
Outdoor Fixed Box

DUST, WATER,
CORROSION &
FROST PROOF



**VB-M640VE &
VB-M641VE**
Outdoor Compact
Vandal Dome



OUTDOOR-READY WITH EXTENSIVE
WEATHERPROOFING AND
F/1.2 - 1.8 IR CORRECTED
SUPER UD LENS

Business *can* be simple

PRODUCT OVERVIEW

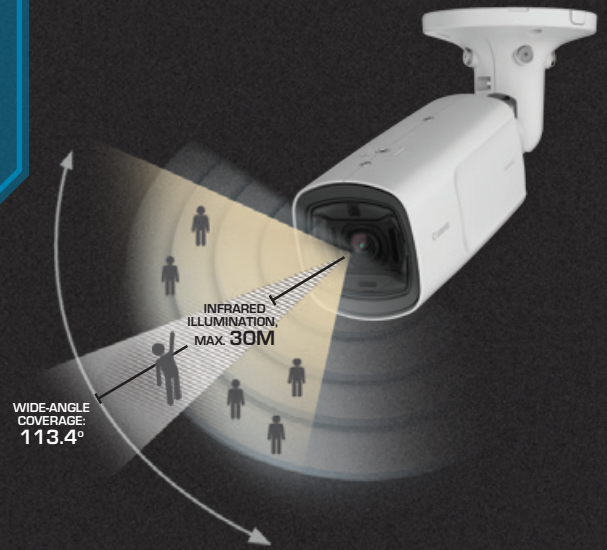
VB-M741LE & VB-M740E

Versatile Wide-Angle Outdoor Bullet Camera, Ideal for any Surveillance Application

- Operable under wide temperature range of -50°C to +55°C
- Dust/water/frost/corrosion-proof without additional housing
- Minimum Subject Illumination of 0.02lux for Colour & 0.001lux for monochrome (VB-M740E), 0lux for monochrome (VB-M741LE with iR on).

1.3M	DiGiC NET II	DiGiC DV III	All Weather Model	IP66	Auto Day/Night	ADSR	Remote PTRZ
Power Focus	Linked Event	Easy Installer	CCMT	AC DC PoE	PoE+	Infrared Illumination	Intrusion detection
Scream Detection	Moving Object Detection	Abandoned Object Detection	Removed Object Detection	Camera Tampering Detection	Passing Detection	Volume Detection	SD Card

For Linked events, multiple power supply, audio & IR-related functions, it is only applicable to VB-M741LE



VB-M641VE & VB-M640VE



Intelligent Vandal Resistant Dome, Ready for any outdoor use:

- Extensive Weatherproofing & Environmental Protection (IK10, IP66, NEMA250 TYPE4X)
- Operational in extreme temperature as low as -40°C to +55°C (with optional heater)
- 111.5° wide angle coverage
- Minimum Subject Illumination of 0.02lux (colour), 0.001lux (monochrome)

1.3M	DiGiC NET II	DiGiC DV III	All Weather Model	IP66	IK10	Auto Day/Night	ADSR
Remote PTRZ	Power Focus	Linked Event	Easy Installer	CCMT	AC DC PoE	Intrusion detection	Scream Detection
Moving Object Detection	Abandoned Object Detection	Removed Object Detection	Camera Tampering Detection	Passing Detection	Volume Detection	microSD	

Linked events, multiple power supply, optional heater accessory & audio-related functions – applicable for VB-M641VE only

Compact Vandal Resistant Dome, for Discreet & Non-Obtrusive Surveillance:

- 111.5° Wide Angle Coverage
- IK10 Vandal Resistant with inbuilt intelligent analytics
- Minimum Subject Illumination of 0.02lux (colour), 0.001lux (monochrome)

1.3M	DiGiC NET II	DiGiC DV III	IK10	Auto Day/Night	ADSR	Remote PTRZ	Power Focus
Linked Event	Easy Installer	CCMT	AC DC PoE	Intrusion detection	Scream Detection	Moving Object Detection	Abandoned Object Detection
Removed Object Detection	Camera Tampering Detection	Passing Detection	Volume Detection	microSD			

Linked events, multiple power supply & audio-related functions – applicable for VB-M641V only

VB-M641V & VB-M640V

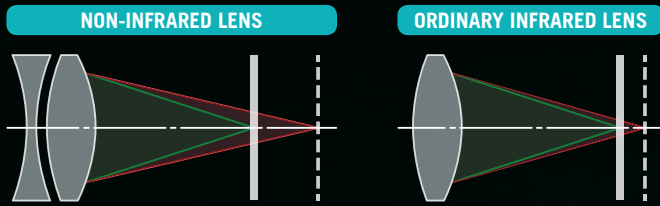


KEY FEATURES

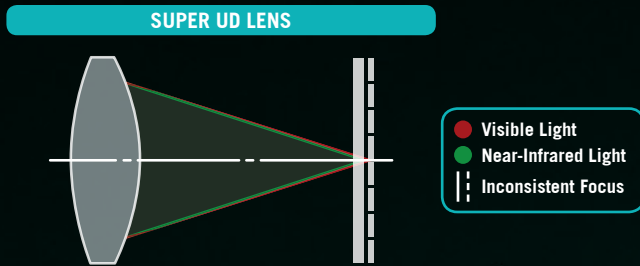
Super UD Lens and Wide Angle Coverage

With wide angle coverage of 111.5° (for VB-M640V/M641V/M640VE/641VE) and 113.4° (VB-M740E and VB-M741LE), Canon's optically corrected lens reduced distortion and chromatic aberration, enabling users to monitor huge areas with lesser cameras.

Together with a low refractive index and dispersion, Super UD Lens minimizes the inconsistent focus to bring sharper and high quality image.

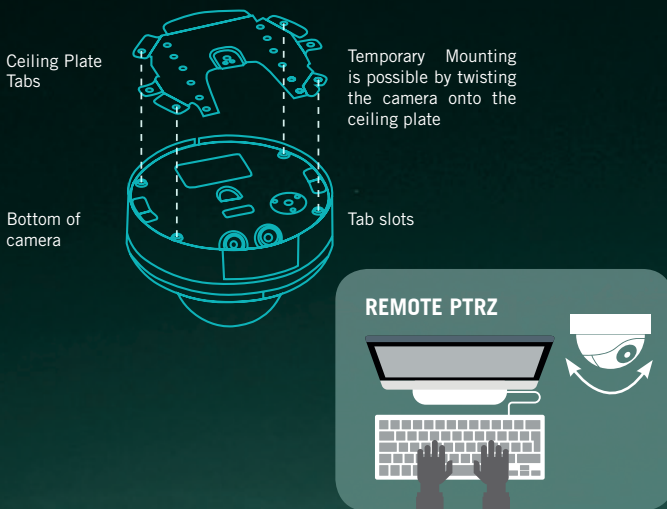


Focus Position under Visible Light (Sensor Position)



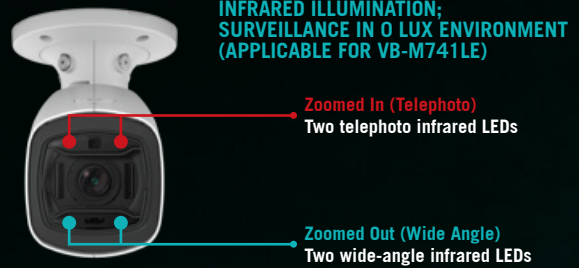
Easy Installation and Convenient Setup

Canon's network camera were designed to be compact and light weight to bring more convenience for installation and setup. Structures for temporary mounting and remote PTRZ were included to facilitate installation single-handedly and reduced cost of installation.

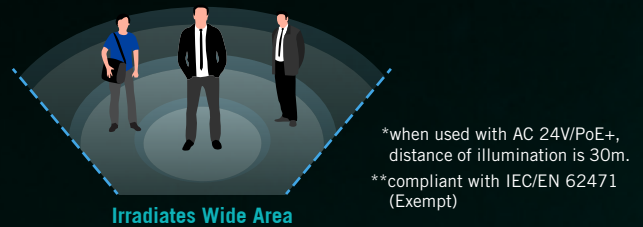


Low Light Performance

Leveraging on the low f-number bright lens, high-sensitivity CMOS sensor and outstanding image processing technology, Canon network camera offers ideal surveillance video quality in both brightly-litted and low-light condition. With a bigger pixel size, the new image sensor are able to capture more light and significantly reduced noise.



Equipped with 2 types of infrared illumination to capture brighter images right up to the edge of the screen across the entire field of view, covering the full angle of view of 113.4° even in the night.



Extensive Weatherproof and Environmental Protection

Designed to withstand the harsh outdoor condition and extreme temperatures, VB-M640VE, VB-M641VE, VB-M740E and VB-M741LE are suitable for various outdoor installation without additional housing.

- IP66 (Water & Dust Proof)**
- IK10 (Withstand impact of 20J)**
- NEMA250 TYPE4X (Frost & Corrosion-Proof)**



SPECIFICATIONS

		VB-M641VE	VB-M640VE	VB-M641V	VB-M640V	VB-M741LE	VB-M740E	
CAMERA	Image Sensor	1/3 type CMOS (primary color filter)						
	Number of Effective Pixels	Approx. 1.3 million pixels						
	Scanning Method	Progressive						
	Lens	2.4 optical zoom (4x digital zoom) lens (electric drive)						
	Focal Length	2.55 (W) – 6.12 mm (T)						
	F-number	F1.2 (W) – F1.8 (T)						
	Viewing Angle	For 16:9 aspect ratios	Horizontal: 111.5° (W) – 46.2° (T) Vertical: 60.5° (W) – 25.9° (T)			Horizontal: 113.4° (W) – 46.5° (T) Vertical: 61.4° (W) – 26.2° (T)		
		For 4:3 aspect ratios	Horizontal: 111.5° (W) – 46.2° (T) Vertical: 81.7° (W) – 34.6° (T)			Horizontal: 113.4° (W) – 46.5° (T) Vertical: 83.0° (W) – 34.9° (T)		
	Day/Night Switch	Auto/Manual						
	Min. Subject Illumination	Day Mode (color): 0.02 lux (F1.2, shutter speed 1/30 sec., when smart shade control is off, 50IRE)					Day Mode (color): 0.02 lux (F1.2, shutter speed 1/30 sec., when smart shade control is off, 50IRE)	
		Night Mode (monochrome): 0.001 lux (F1.2, shutter speed 1/30 sec., when smart shade control is off, 50IRE)					Night Mode (monochrome): 0 lux (F1.2, shutter speed 1/30 sec., when smart shade control is off, 50IRE with IR lamp on)	
		When using the Dome Unit (Smoked) (sold separately) Day Mode (color): 0.04 lux (F1.2, shutter speed 1/30 sec., when smart shade control is off, 50IRE)					Night Mode (monochrome): 0.001 lux (F1.2, shutter speed 1/30 sec., when smart shade control is off, 50IRE)	
		Night Mode (monochrome): 0.002 lux (F1.2, shutter speed 1/30 sec., when smart shade control is off, 50IRE)					Night Mode (monochrome): 0.001 lux (F1.2, shutter speed 1/30 sec., when smart shade control is off, 50IRE)	
	Focus	Auto/One-shot AF/Manual/Fixed at infinity						
	Shooting Distance (from front of lens)	Day Mode: 0.3 m (12 in.) – infinity Night Mode: 0.3 m (12 in.) – infinity						
Shutter Speed	1, 1/2, 1/4, 1/8, 1/15, 1/30, 1/60, 1/100, 1/120, 1/250, 1/500, 1/1000, 1/2000, 1/4000, 1/8000, 1/10000, 1/16000 sec							
Exposure	Auto/Auto (Flickerless)/Auto (Shutter-priority AE)/Manual (Shutter Speed, Aperture, Gain)							
White Balance	Auto/Light Source/Manual Light Source: Daylight Fluorescent/White Fluorescent/Warm Fluorescent/Mercury Lamp/Sodium Lamp/Halogen Lamp Manual: One-shot WB/R Gain/B Gain							
Metering Mode	Center-Weighted/Average/Spot							
Exposure Compensation	9 levels							
Smart Shade Control	Auto/Manual/Disable Auto: 3 levels Manual: 7 levels – Brightens shaded areas of a video							
Haze Compensation	Auto/Manual/Disable Auto: 3 levels Manual: 7 levels							
AGC Limit	6 levels							
Image Stabilizer	2 levels (digital)							
IR Illumination Range					30 m (98.4 ft.) (When using 24 V AC, PoE+)			
Pan Angle Range	350° (±175°)				344° (±172°)			
Tilt Angle Range	150° (±75°)				93° (-3° – +90°) – Camera is at 0° when attached to the ceiling and facing straight down, and 90° when at a horizontal position.			
Rotation Angle Range	350° (±175°)				344° (±172°)			
Moving Speed	Pan: 20.1°/sec. Tilt: 20.7°/sec. Rotation: 40.0°/sec. – When Using Camera Angle Setting Tool							
Video Compression Method	JPEG, H.264							
Video Size	JPEG, H.264: 1280 x 720, 640 x 360, 320 x 180, 1280 x 960, 640 x 480, 320 x 240							
Video Quality	JPEG, H.264: 10 levels JPEG: 0.1 – 30 fps H.264: 1/2/3/5/6/10/15/30 fps							
Frame Rate	– Values represent streaming performance from the camera. – The frame rate may be reduced due to Viewer computer's specs, the number of clients accessing at the same time, network loads, video quality setting, type or movement of the subject or other reasons. Maximum frame rate when used in the following combinations: When streaming H.264(1) (1280 x 720) and H.264(2) (1280 x 720) simultaneously: 15 fps When streaming H.264(1) (1280 x 960) and H.264(2) (1280 x 960) simultaneously: 15 fps							
I-Frame Interval	0.5/1/1.5/2/3/4/5 sec.							
Simultaneous Client Access	Max. 30 Clients + 1 Admin Client – H.264: Max. 10 Clients							
Bit Rate Control	Target Bit Rate: 64/128/256/384/512/768/1024/2048/3072/4096/6144/8192/10240/12288/14336/16384 kbps							
ADSR: Area-specific Data Size Reduction	Number of Specified Areas: Max. 8 areas							
Security	Camera Control: Administrator, Authorized user, Guest user (level of control varies depending on user) Access Control: User authority (user name and password), Host Access Restrictions (IPv4, IPv6) IEEE802.1X: EAP-MD5, EAP-TLS, EAP-TTLS, EAP-PEAP Encrypted Communications: SSL/TLS, IPsec							
Protocol	IPv4: TCP/IP, UDP, HTTP, FTP, SNMP (MIB2), SMTP (Client), DHCP (Client), DNS (Client), mDNS, ARP, ICMP, POP3 (Client), NTP (Client), SMTP authentication (POP before SMTP, SMTP-AUTH), AutoIP, RTP/RTCP, RTSP, SSL/TLS, IPsec, WV-HTTP (Canon proprietary), ONVIF (Profile S, Profile G) IPv6: TCP/IP, UDP, HTTP, FTP, SMTP (Client), DHCPv6 (Client), DNS (Client), mDNS, ICMPv6, POP3 (Client), NTP (Client), SMTP authentication (POP before SMTP, SMTP-AUTH), RTP/RTCP, RTSP, SSL/TLS, IPsec, WV-HTTP (Canon proprietary), ONVIF (Profile S, Profile G)							
Audio Compression Method	G.711 μ -law (64 kbps)	-	G.711 μ -law (64 kbps)	-	G.711 μ -law (64 kbps)	-		
Audio Communication Method	Full-duplex (two-way) – Echo cancellation function compliant RTP, Sound Transfer Protocol by Canon	-	Full-duplex (two-way) – Echo cancellation function compliant RTP, Sound Transfer Protocol by Canon	-	Full-duplex (two-way) – Echo cancellation function compliant RTP, Sound Transfer Protocol by Canon	-		
Audio File Playback	Available (audio files can be played back when an event is triggered by the intelligent function or external device input) – A third-party amplifier speaker is necessary	-	Available (audio files can be played back when an event is triggered by the intelligent function or external device input) – A third-party amplifier speaker is necessary	-	Available (audio files can be played back when an event is triggered by the intelligent function or external device input) – A third-party amplifier speaker is necessary	-		
Privacy Mask	Number of registration: Max. 8 places, Number of mask colors: 1 (select from 9 colors)							
Preset	Number of registers: Max. 20 positions (+Home Position) Items to Reg.: Digital Pan/Digital Tilt/Digital Zoom, Exposure, Smart Shade Control, Focus, White Balance, Video Quality Adjustment, Day/Night, Haze Compensation Number of Preset Tour Route: Max. 1							
Intelligent Function (Video)	Detection Types: Moving Object Detection, Abandoned Object Detection, Removed Object Detection, Camera Tampering Detection, Passing Detection, and Intrusion Detection Detection Settings: Max. 15							
Intelligent Function (Audio)	Volume Detection, Scream Detection	-	Volume Detection, Scream Detection	-	Volume Detection, Scream Detection	-		
Event Trigger Type	External Device Input, Intelligent Function (Video), Intelligent Function (Audio), Timer, Day/Night Switch Number of Linked Events: 2 Linked Event Conditions: AND, OR (whether or not there is a sequence to events)	Intelligent Function (Video), Timer, Day/Night Switch	External Device Input, Intelligent Function (Video), Intelligent Function (Audio), Timer, Day/Night Switch Number of Linked Events: 2 Linked Event Conditions: AND, OR (whether or not there is a sequence to events)	Intelligent Function (Video), Timer, Day/Night Switch	External Device Input, Intelligent Function (Video), Intelligent Function (Audio), Timer, Day/Night Switch Number of Linked Events: 2 Linked Event Conditions: AND, OR (whether or not there is a sequence to events)	Intelligent Function (Video), Timer, Day/Night Switch		
Image Upload	FTP/HTTP/SMTP (e-mail)							
Event Notification	HTTP/SMTP (e-mail)							

SERVER

		VB-M641VE	VB-M640VE	VB-M641V	VB-M640V	VB-M741LE	VB-M740E
SERVER	Image Cropping Function	Digital PTZ Cropping sizes: 640 x 360/512 x 288/384 x 216/256 x 144/128 x 72, 640 x 480/512 x 384/384 x 288/256 x 192/128 x 96					
	On-Screen Display	Available					
	Daylight Saving Time	Available					
	Viewer	Camera-side: Admin Viewer, VB Viewer Client-side: RM-Lite Viewer					
	Admin Tools	Privacy Mask Setting Tool, Intelligent Function Setting Tool, Log Viewer, Recorded Video Utility					
	Included Software	Camera Management Tool, Camera Angle Setting Tool, RM-Lite, Proxy Authentication Admin Tools/Admin Viewer					
	Language	German/English/Spanish/French/Italian/Russian/Turkish/Chinese (Simplified)/Japanese					
	OS	Windows Vista Ultimate/Business/Enterprise/Home Premium SP2 32/64-bit Windows 7 Ultimate/Professional/Enterprise/Home Premium SP1 32/64-bit Windows 8/Windows 8 Pro/Windows 8 Enterprise 32/64-bit* Windows 8.1/Windows 8.1 Pro/Windows 8.1 Enterprise 32/64-bit* Windows Server 2008 Standard SP2 32/64-bit Windows Server 2008 R2 Standard SP1 64-bit Windows Server 2012 Standard 64-bit* Windows Server 2012 R2 Standard 64-bit* * The included software or the software installed on the camera cannot be started from the Start screen added to Windows 8 and later.					
	Operating System Language	German/English/Spanish/French/Italian/Russian/Turkish/Chinese (Simplified)/Japanese – Language switching environment using language-packs is not supported					
	Compatible Browser	Internet Explorer 8/9 32-bit, Internet Explorer 10/11 – Must be configured to allow use of JavaScript, XAML browser applications, and IFRAME. (html tag) – For VB Viewer only, cookies must be enabled					
Software (Runtime Libraries)	.NET Framework 3.5 SP1 (When using Internet Explorer 8/9) – Must be installed on Windows Vista and Windows Server 2008 systems .NET Framework 4.5 (When using Internet Explorer 10/11) – Must be installed on Windows 7 and Windows Server 2008 R2 systems						
CPU (Recommended)	Intel Core i7-2600 or higher						
Graphics Board (Recommended)	Not specified						
Memory (Recommended)	2 GB or higher						
Viewer Display (Recommended)	1920 x 1080 or higher						
Network Terminal	LAN x 1 (RJ45, 100Base-TX (auto/full-duplex/half-duplex))						
Audio Input Terminal (common for LINE IN & MIC IN)	φ3.5 mm (φ0.14 in.) mini-jack connector (monaural) LINE IN (connect to an amplifier microphone) or MIC IN (connect to a microphone w/o amplifier) – Switch LINE IN/MIC IN in the setting page.	-	φ3.5 mm (φ0.14 in.) mini-jack connector (monaural) LINE IN (connect to an amplifier microphone) or MIC IN (connect to a microphone w/o amplifier) – Switch LINE IN/MIC IN in the setting page. Use the included interface cable	-	φ3.5 mm (φ0.14 in.) mini-jack connector (monaural) LINE IN (connect to an amplifier microphone) or MIC IN (connect to a microphone w/o amplifier) – Switch LINE IN/MIC IN in the setting page.	-	
Audio Output Terminal (LINE OUT)	φ3.5 mm (φ0.14 in.) mini-jack connector (monaural) LINE OUT (connect to an amplifier speaker)	-	φ3.5 mm (φ0.14 in.) mini-jack connector (monaural) LINE OUT (connect to an amplifier speaker) Use the included interface cable	-	φ3.5 mm (φ0.14 in.) mini-jack connector (monaural) LINE OUT (connect to an amplifier speaker)	-	
External Device I/O Terminal	Input x 2, Output x 2	-	Input x 2, Output x 2	-	Input x 2, Output x 2	-	
Memory Card	microSD Memory Card, microSDHC Memory Card, microSDXC Memory Card Compatible. Recorded Content: Log, Video (Event, Manual, ONVIF, Timer, Upload) Frame Rate: Max. 1 fps (JPEG), Max. 30 fps (H.264)			SD Memory Card, SDHC Memory Card, SDXC Memory Card Compatible. Recorded Content: Log, Video (Event, Manual, ONVIF, Timer, Upload) Frame Rate: Max. 1 fps (JPEG), Max. 30 fps (H.264)			
Operating Environment	Temperature When the heater unit (sold separately) is installed Operating Temperature Range: AC: -40°C – +55°C (-40°F – +131°F) DC, PoE: -10°C – +55°C (+14°F – +131°F) Start-up Temperature Range: AC: -30°C – +55°C (-22°F – +131°F) DC, PoE: -10°C – +55°C (+14°F – +131°F) – Sunshade cover (sold separately) necessary when under direct sun exposure When the heater unit (sold separately) is not installed AC, DC, PoE: -10°C – +55°C (+14°F – +131°F) – Sunshade cover (sold separately) necessary when under direct sun exposure Humidity 5% – 85% (without condensation)	Temperature PoE: -10°C – +55°C (+14°F – +131°F) – Sunshade cover (sold separately) necessary when under direct sun exposure Humidity 5% – 85% (without condensation)	Temperature AC, DC, PoE: -10°C – +50°C (+14°F – +122°F) Humidity 5% – 85% (without condensation)	Temperature PoE: -10°C – +50°C (+14°F – +122°F) Humidity 5% – 85% (without condensation)	Temperature Operating Temperature Range (including direct sun exposure) AC, PoE+: -50°C – +55°C (-58°F – +131°F) DC, PoE: -10°C – +55°C (+14°F – +131°F) Start-up Temperature Range (including direct sun exposure) AC, PoE+: -30°C – +55°C (-22°F – +131°F) DC, PoE: -10°C – +55°C (+14°F – +131°F) Humidity 5% – 85% (without condensation)	Temperature Operating Temperature Range (including direct sun exposure) PoE: -10°C – +55°C (+14°F – +131°F) Humidity 5% – 85% (without condensation)	
Storage Environment	Temperature: -30°C – +60°C (-22°F – +140°F) Humidity 5% – 90% (without condensation)						
Installation Method	Ceiling mount/Surface mount						
Power Supply	PoE: PoE power supply via LAN connector (IEEE802.3at Type1 Class 0 compliant) AC Adapter: PA-V18 (100 – 240 V AC) (sold separately) External power source: 24 V AC/12 V DC	PoE: PoE power supply via LAN connector (IEEE802.3at Type1 Class 0 compliant)	PoE: PoE power supply via LAN connector (IEEE802.3at Type1 Class 0 compliant) AC Adapter: PA-V18 (100 – 240 V AC) (sold separately) External power source: 24 V AC/12 V DC	PoE: PoE power supply via LAN connector (IEEE802.3at Type1 Class 0 compliant)	PoE: PoE power supply via LAN connector (IEEE802.3at Type1 Class 0 compliant) AC Adapter: PA-V18 (100 – 240 V AC) (sold separately) External power source: 24 V AC/12 V DC	PoE: PoE power supply via LAN connector (IEEE802.3at Type1 Class 0 compliant)	
Power Consumption	PoE: Max. approx. 8.9 W*1 AC Adapter PA-V18: Max. approx. 10.5 W (100 V AC) Max. approx. 10.6 W (240 V AC) DC: Max. approx. 9.5 W AC: Max. approx. 9.1 W Max. approx. 21.7 W*2 *1 Class 0 power sourcing equipment (requests 15.4 W) *2 When the heater unit (sold separately) is installed	PoE: Max. approx. 8.9 W* * Class 0 power sourcing equipment (requests 15.4 W)	PoE: Max. approx. 8.4 W* AC Adapter PA-V18: Max. approx. 9.8 W (100 V AC) Max. approx. 9.8 W (240 V AC) DC: Max. approx. 8.7 W AC: Max. approx. 8.1 W * Class 0 power sourcing equipment (requests 15.4 W)	PoE: Max. approx. 8.4 W* * Class 0 power sourcing equipment (requests 15.4 W)	PoE+: Max. approx. 21.2 W*1 PoE: Max. approx. 10.1 W*2 AC Adapter PA-V18: Max. approx. 12.8 W (100 V AC) Max. approx. 12.8 W (240 V AC) DC: Max. approx. 11.1 W AC: Max. approx. 22.2 W *1 Class 4 power sourcing equipment (requests 30.0 W) *2 Class 0 power sourcing equipment (requests 15.4 W)	PoE: Max. approx. 7.4 W* * Class 0 power sourcing equipment (requests 15.4 W)	
Dimensions	(φ x H) φ180 x 131 mm (φ7.09 x 5.16 in.) – Camera only (excluding Ceiling Plate)	(φ x H) φ180 x 131 mm (φ7.09 x 5.16 in.) – Camera only (excluding Ceiling Plate)	(φ x H) φ150 x 129 mm (φ5.91 x 5.08 in.) – Camera only (excluding Ceiling Plate)	(φ x H) φ150 x 129 mm (φ5.91 x 5.08 in.) – Camera only (excluding Ceiling Plate)	(H x W x D) 111 x 102 x 214 mm (4.37 x 4.02 x 8.43 in.) (camera body only) – Length when joint fully extended (D): 384 mm (15.12 in.)	(H x W x D) 111 x 102 x 214 mm (4.37 x 4.02 x 8.43 in.) (camera body only) – Length when joint fully extended (D): 384 mm (15.12 in.)	
Weight	Approx. 1620 g (3.58 lb.)	Approx. 1590 g (3.51 lb.)	Approx. 890 g (1.97 lb.)	Approx. 880 g (1.95 lb.)	Approx. 2120 g (4.68 lb.)	Approx. 2040 g (4.50 lb.)	
Impact Resistance	IK10 (20J)						
Dust-resistant/Waterproof Specification	IP66 rated			IP66 rated			

DETAILED SPECIFICATION (CONDITIONS OF INSTALLATION/STORAGE)

INTERFACE

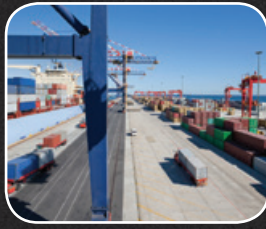
APPLICATION

SERVER

SUITABLE FOR ANY APPLICATION INCLUDING:



PLANT MONITORING



PORT SURVEILLANCE



MUSEUM

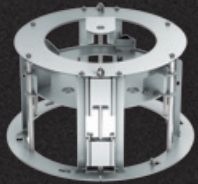


STADIUM

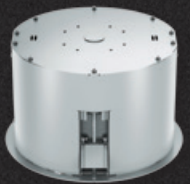


WAREHOUSE

COMPATIBLE ACCESSORIES:



Recessed Mounting Kit
SR640-S-VB for
VB-M640V/641V



Plenum Mounting Kit
SR640-P-VB for
VB-M640V/641V



Pendant Mounting Kit
PC640-VB for VB-M640V/
641V/640VE/641VE/
740E/741LE



Conduit Adapter
CA640-VB for
VB-M640VE/641VE



AC Power Adapter
PA-V18 for VB-M640V/641V/640VE/
641VE/740E/741LE



Heater Unit
HU641-VB for VB-641VE



Recessed Mounting Kit
SR640-S-VB for
VB-M640V/641V



Plenum Mounting Kit
SR640-P-VB for
VB-M640V/641V



Tinted Capsule
DU640-S-VB for
VB-M640V/641V/640VE/641VE



Sunshade Cover
SC640-VB for
VB-M640VE/641VE



Conduit Box
CB740-VB for
VB-M740E/741LE

Canon

Delighting You Always

**SOUTH & SOUTHEAST ASIA
REGIONAL HEADQUARTERS**

Canon Singapore Pte. Ltd.
1 Fusionopolis Place,
#15-10, Galaxis,
Singapore 138522
Tel: 65-6799-8888
Fax: 65-6799-8882

www.canon-asia.com
www.canon.com.sg

HONG KONG
Canon Hongkong Co. Ltd.
19/F The Metropolis Tower, 10 Metropolis
Drive, Hunghom, Hong Kong
Tel : (852) 3191 2388
Fax : (852) 2369 3800
www.canon.com.hk

INDIA
Canon India Pvt. Ltd.
7th Floor, Tower B, Building #5,
DLF Epitome, DLF Phase III,
Gurgaon 122002
Tel : (91) 124 416 0000
Fax : (91) 124 416 0011
www.canon.co.in

INDONESIA
P.T. Datascrip
Jl. Selaparang Blok B-15 Kav.9
Kompleks Kemayoran
Jakarta 10610, Indonesia
Tel : (62) 21 6544515
Fax : (62) 21 6544811 - 13
Call Center : (62) 21 2922 6000
www.datascrip.com

MALAYSIA
Canon Marketing (Malaysia) Sdn. Bhd.
Block D, Peremba Square,
Saujana Resort, Section U2,
40150 Shah Alam,
Selangor Darul Ehsan, Malaysia
Tel : (60) 3 7844 6000
Fax : (60) 3 7844 6048
www.canon.com.my

MYANMAR
Myanmar Golden Rock International Co. Ltd.
No. 79-D, Bo Chein Street, Pyay Road,
6 ½ Mile, Hlaing Township,
Yangon, Myanmar
Tel : +95 (1) 654810 to 654819
+95 (1) 654844 to 654848
Fax : +95 1654820
Email : sales@mgr.com.mm

PHILIPPINES
Canon Marketing (Philippines), Inc.
7th Floor and Ground Floor
Commerce and Industry Plaza,
Campus Ave.
Cor. Park Ave., McKinley Hill,
Fort Bonifacio, Taguig City
Tel : (63) 2 884 9000
Fax : (63) 2 556 1456
www.canon.com.ph

TAIWAN
Canon Marketing Taiwan Co. Ltd.
19F, No. 100, Sec 2 Roosevelt Road, Taipei,
Taiwan, R.O.C.
Tel : (886) 2 6632 8888
Fax : (886) 2 7725 5860
www.canon.com.tw

THAILAND
Canon Marketing (Thailand) Co. Ltd.
No.98 Sathorn Square Office Tower,
22nd-24th Floor, North Sathorn Road,
Silom Bangrak, Bangkok 10500
Tel : (66) 2 344 9999
Fax : (66) 2 344 9967
www.canon.co.th

VIETNAM
Canon Marketing Vietnam Co. Ltd.
10th & 11th Floor, President Place,
93 Nguyen Du Street District 1,
Ho Chi Minh City, Vietnam
Tel : (84) 8 3820 0466
Fax : (84) 8 3820 0477

Branch of Canon Marketing
Vietnam Co. Ltd. (Hanoi)
11th Floor, CharmVit Tower,
117 Tran Duy Hung Street,
Trung Hoa Ward
Cau Giay District, Hanoi
Tel : (84) 4 3771 1677
Fax : (84) 4 3771 1678
www.canon.com.vn

If the contact details for your country or region is not listed above, please contact Canon Singapore, South & Southeast Asia Regional Headquarters for more information.

DEALER'S STAMP

0196W678 © Canon Singapore Pte Ltd 2014. All rights reserved.

This document is for information purpose only and the contents are subject to change without notice.

Product/ Service options, name and availability may vary by regions. Nothing in this document should be construed as warranty.

We expressly disclaim any liability or contractual obligations with respect to this document. Canon and Business can be simple are trademark of Canon Inc. and/or its affiliates. Other names may be the trademark of their respective owners.