

The Megapixel & WDR IP Camera

The new era of innovations in network surveillance technology is here!



(Lens is not included.)

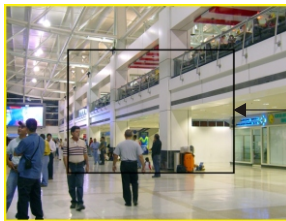
LC-7411



APPRO's LC-7411 is a high performance Fixed Network Camera which is equipped with a 1.3 megapixel CMOS sensor and a resolution of up to 1280x1024.

• 1.3 Megapixel

The LC-7411 offers you to view the video feed with a large field of high resolution at a 1.3 megapixel that enables to provide you the clear image with great detail.



• WDR

Besides, the LC-7411 provides the WDR technology which is aimed at coping with problems like poor quality images shot against a strong backlight.



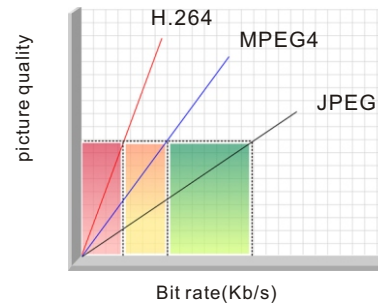
WDR camera



No WDR

• H.264 compression

Currently, the H.264 is the most common and dynamic video compression format and a powerful compression codec which delivers a superior image quality at a low bit rate.



Picture quality & Bit rate comparison chart

• 3GPP

Users can view a live scene via the Internet-ready with a 3GPP installed mobile phone.



In short, APPRO's LC-7411 provides quality images and professional surveillance functions for comprehensive security applications.

Features

- Adopts TI TMS320DM365 digital media processor.
- Sony 1.3-megapixel CMOS sensor.
- Simultaneous H.264, MPEG4, and MJPEG video compression.
- Four Multi-profile applications: Selectable resolutions, frame rates, qualities, and image chopping.
- Min. illumination: 0.2 lux at F1.2.
- Two-way audio.
- 3GPP mobile surveillance supports.
- Advanced motion detection (96 zones, Sensitivity: 0~100 %).
- Built-in SD / SDHC card for schedule and alarm recording.
- ONVIF supports.
- Full range of power options: DC12V / AC 24V / PoE (IEEE 802.3af).

The Megapixel / WDR / Day & Night / H.264 IP camera LC-7411

SPECIFICATIONS

Camera

- Image sensor: 1.3M Sony CMOS Sensor .
- Lens: C / CS mount.
- Minimum illumination: Color: 0.2 Lux @ F1.2.
- IR cut filter: Yes.
- Day & Night: Yes (Auto/ Day/ Night/ Schedule).
- WDR: Yes.

Video

- Video Compression: H.264 / MPEG4 / MJPEG.
- Resolution: 1280 x 1080 / 1280 x 720 / D1/ QCIF / CIF.
- Video streaming:
 - Simultaneous H.264, MPEG4, MJPEG.
 - Multi-profile: resolution / compression / frame rate / quality / image chopping control.
- Advanced image functions: Digital image chopping.
- ePTZ: Yes (browser).
- Image settings:
 - Adjustable image size, quality, and bit rate.
 - Day/ Night mode.
 - Flip & Mirror.
 - AGC, AWB, AES, BLC.
 - Automatic, manual or scheduled.
 - Time stamp and text caption overlay.
 - Supports privacy masks.
- Video management software: Free bundle recording software / SDK, including HTTP-API / ActiveX / ONVIF.

Audio

- Audio streaming: Two-way, half duplex, simplex, MDIX support.
- Compression: G.726 / G.711 / GSM.
- S/N ratio: More than 58dB.
- Inputs / outputs: 1 x input / 1 x output(3.5mm earphone jack).

Network

- Security: Multi-level password protection, IP address filtering, HTTPS encryption, IEEE 802.1X network access control.
- Protocols: IPv4, ARP, TCP/IP, UDP, ICMP, DHCP, HTTP, HTTPS, RTP/RTCP/RTSP, 3GPP, NTP, DNS, DDNS, PPPoE, UPnP, SAMBA, *FTP, *SMTP.
- Users: Access by 16 simultaneous users.
- Firmware update: SD card / HTTP.

Alarm

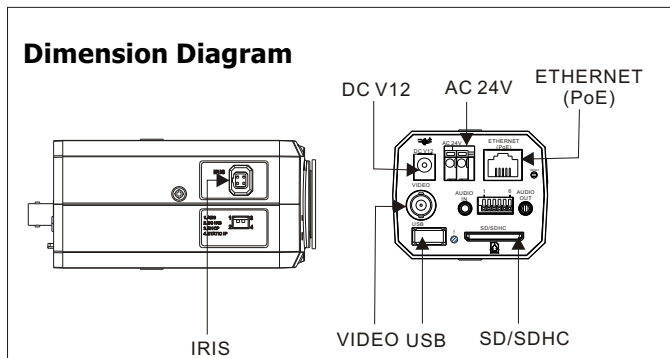
- Recording: by SD card / CMS recording.
- Pre-alarm recording: 0~9's.
- Advanced motion (96 zone, Sensitivity: 0~100 %).
- Trigger: by motion detection, manual, reboot, network disconnect, and digital input.
- Notification: SD card recording, SMTP, FTP, HTTP, alarm output.

Connectors

- RJ-45: 10BASE-T/100BASE-TX.
- Digital I/O: Push-in: 1 x digital input / 1 x digital output / 2 x RS-485(D+/D-) / 1 x DC output(12V DC / 50mA) / 1xGround.
- Earphone jack : 1x3.5 mm (1 x Audio in [mic. In / line in] , 1 x Audio out [line output]).
- DIP Switch: 1. AES 2. DC iris 3. DHCP 4. Static IP.
- Iris: DC IRIS.
- Reset: Reset for factory default.
- Local storage device: SD / SDHC card slot.

General

- LED indicators: Power / Network / SD card.
- Power:
 - 12V DC (DC power jack).
 - 24V AC (2pin terminal block).
 - 802.3af compliant Power over Ethernet (IEEE 802.3af , Class 3).
- Processors: TMS320DM365.
- OS: Linux 2.6 kernel.
- Operating conditions: 0-50°C.
- Approvals: CE, FCC, RoHS.
- Dimensions (HxWxD): 56.5 x 68 x 114.5 mm.
- Accessories included:
 - Installation Guide.
 - CD x 1 (includes User's Manual and CMS software).
 - Power adapter: (Input: 100-240VAC, 50/60Hz,Output: 12VDC, 1A).
 - USB connector line.



*Design and specifications are subject to change without notice.