

AXIS 207/207W/207MW Network Cameras

True bandwidth-efficient MPEG-4 network cameras.



- > Simultaneous MPEG-4 and Motion JPEG
- > Built-in microphone
- > Wireless connectivity (207W/207MW)
- > Megapixel resolution (207MW)

AXIS 207 Network Cameras offer the best image quality in their class, providing excellent image quality also in poor lighting conditions. These network cameras are ideal for securing small businesses, home offices and residences over a local area network or the Internet.

AXIS 207 Network Cameras provide high bandwidth efficiency, thanks to their MPEG-4 implementation that includes motion estimation. Simultaneous MPEG-4 and Motion JPEG allow systems to be optimized for both image quality and bandwidth.

The built-in microphone enables remote users to not only view, but also listen in on an area and increase the monitoring options.

AXIS 207W and AXIS 207MW come with both wireless IEEE 802.11g and Ethernet network interface for flexible installation.

The megapixel resolution of AXIS 207MW allows important areas like entrances or checkouts to be monitored in great detail.



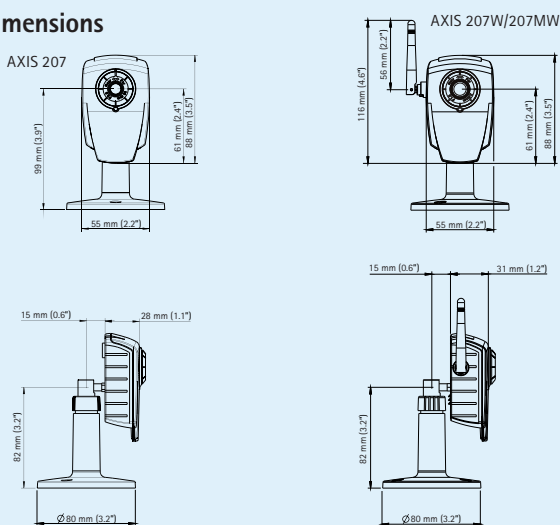
Technical specifications – AXIS 207/207W/207MW Network Cameras

Camera	
Models	AXIS 207: VGA resolution, wired interface AXIS 207W: VGA resolution, wired and wireless interface AXIS 207MW: Megapixel resolution, wired and wireless interface
Image sensor	AXIS 207/207W: 1/4" Progressive scan RGB VGA CMOS AXIS 207MW: 1/3" Progressive scan RGB 1.3 Megapixel CMOS
Lens	AXIS 207/207W: 4.0 mm, F2.0, fixed iris, horizontal angle of view: 55° AXIS 207MW: 3.6 mm, F1.8, fixed iris, horizontal angle of view: 74°
Light sensitivity	AXIS 207/207W: 1-10000 lux, F2.0 AXIS 207MW: 2-10000 lux, F1.8
Shutter time	AXIS 207/207W: 1/10000 s to 1/2 s AXIS 207MW: 1/10000 s to 1/10 s
Video	
Video compression	MPEG-4 Part 2 (ISO/IEC 14496-2) Motion JPEG
Resolutions	AXIS 207/207W: up to 640x480 AXIS 207MW: up to 1280x1024
Frame rate MPEG-4	AXIS 207/207W: Up to 30 fps AXIS 207MW: Up to 7 fps at 1280x1024, up to 10 fps at 1280x720
Frame rate Motion JPEG	AXIS 207/207W: Up to 30 fps AXIS 207MW: Up to 12 fps at 1280x1024, up to 14 fps at 1280x720
Video streaming	Simultaneous MPEG-4 and Motion JPEG Controllable frame rate and bandwidth VBR/CBR MPEG-4
Image settings	Compression, rotation, color, brightness, contrast, white balance Text overlay
Audio	
Audio streaming	Simplex
Audio compression	AAC LC 8 kHz AXIS 207W/207MW: G.711 PCM 8 kHz, G.726 ADPCM 8 kHz Configurable bit rate
Audio input/output	Built-in microphone
Network	
Wireless interface	AXIS 207W/207MW: IEEE 802.11g/b
Security	Password protection AXIS 207W/207MW: IP address filtering, HTTPS encryption, WEP 64/128 bit, WPA-PSK, WPA2-PSK
Supported protocols	IPv4, HTTP, TCP, ICMP, QoS Layer 3 DiffServ, RTSP, RTP, UDP, IGMP, RTCP, SMTP, FTP, DHCP, UPnP, Bonjour, ARP, DNS, DynDNS, SOCKS, NTP AXIS 207W/MW: IPv6, HTTPS, SNMPv1/v2c/v3 (MIB-II)

System integration	
Application Programming Interface	Open API for software integration, including VAPIX® from Axis Communications available at www.axis.com
Intelligent video	Video motion detection, audio detection
Alarm triggers	Intelligent video and external input
Alarm events	File upload via FTP, HTTP and email Notification via email, HTTP and TCP External output activation
Video buffer	AXIS 207/207W: 4 MB pre- and post alarm AXIS 207MW: 2 MB pre- and post alarm
General	
Processors and memory	ARTPEC-A 32 MB RAM AXIS 207: 4 MB Flash AXIS 207W/207MW: 8 MB Flash
Power	AXIS 207: 4.9 – 5.1 V DC, max 2.5 W AXIS 207W: 4.9 – 5.1 V DC, max 3.5 W AXIS 207MW: 4.9 – 5.1 V DC, max 4.0 W
Connectors	RJ-45 Ethernet 10BASE-T/100BASE-TX, Auto-MDIX Terminal block for 1 alarm input, 1 output and alternative power connection
Operating conditions	5 – 50 °C (41 – 122 °F) Humidity 20 – 80% RH (non-condensing)
Approvals	AXIS 207: EN 55022 Class B, EN 61000-3-2, EN 61000-3-3, EN 55024, EN 61000-6-1, FCC Part 15 Subpart B Class B, ICES-003 Class B, VCCI Class B, C-tick AS/NZS 3548, EN 60950-1 AXIS 207W/207MW: EN 300 328, EN 301 489, FCC Part 15 Subpart B & C Class B, ICES-003 Class B, RSS210, VCCI Class B, TELEC, C-tick AS/NZS 4771, MIC, EN 60950-1 Power supply: EN 60950-1, UL, CSA
Weight	AXIS 207: 180 g (0.39 lb.) AXIS 207W/207MW: 190 g (0.42 lb.)
Included accessories	Power supply, stand, clamp, connector block, Installation Guide, CD with installation tool, software and User's Manual, Windows decoder 1-user license

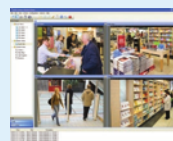
More information is available at www.axis.com

Dimensions



Optional accessories

Various housings, AXIS 207 only



For information on AXIS Camera Station and video management software from Axis' Application Development Partners, see www.axis.com/products/video/software/